

# MONITOR MOUNTS

Efficiency through ergonomics





- 4** Efficiency through ergonomics
- 6** Flexible. Stable. High-quality. Sustainable.
- 8** Monitor mount arm for one screen
- 12** Monitor mount for two screens
- 14** Desk mount for one monitor and one tablet
- 16** Wall mount for one monitor
- 18** Wall mount arm for one monitor
- 20** Technical details

# Efficiency through ergonomics

**Why are monitor mounts so important in the modern workplace?**

More and more people are spending increased amounts of time at their computer. Whether it's at work, at home or in our free time, our screen time is constantly on the rise.

**Ergonomic monitor positioning is essential.**

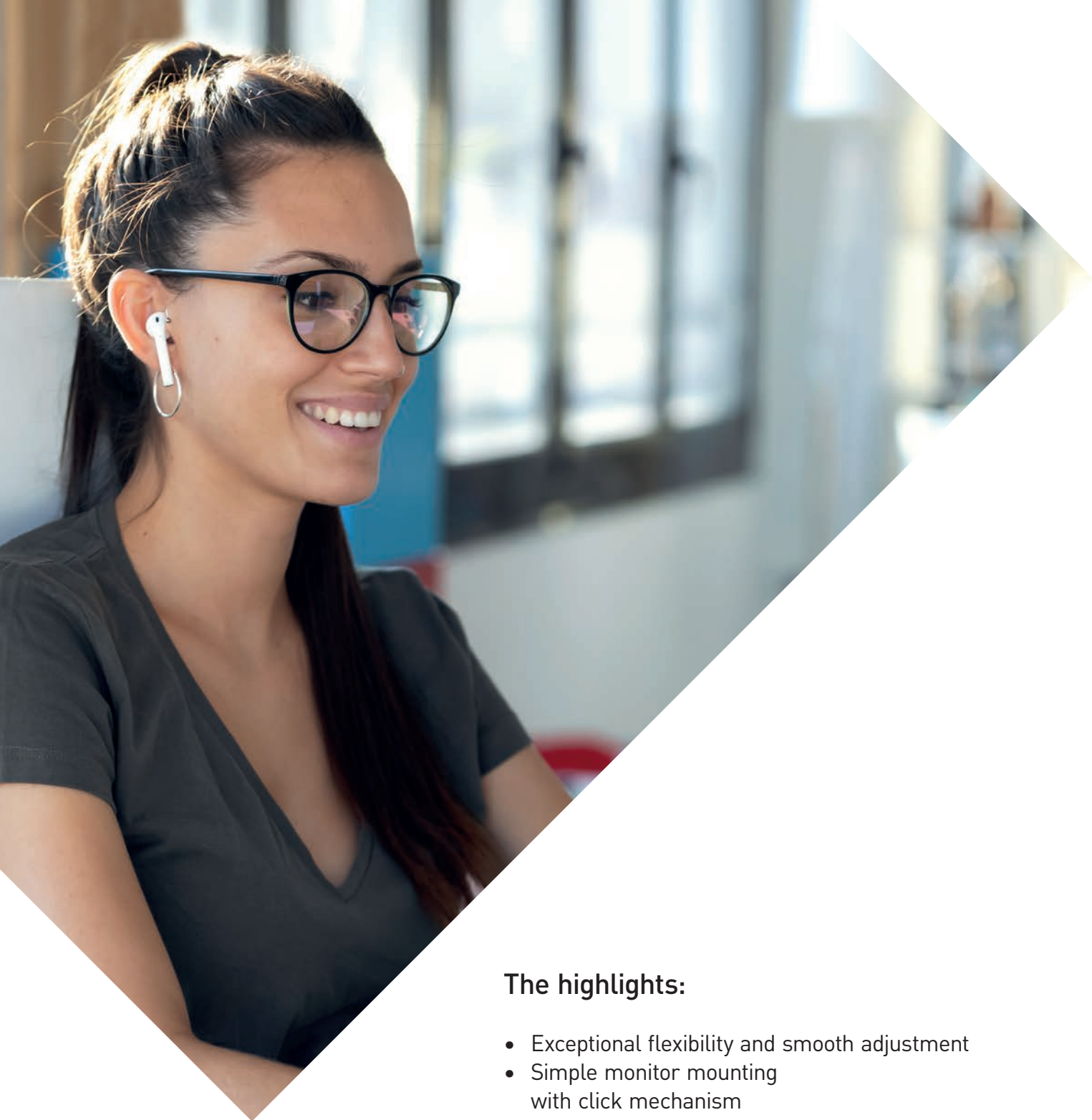
Monitors are among the most important tools in a modern working environment. When positioned ergonomically, they have a major impact on your health. DURABLE's monitor mounts for desk and wall are the intelligent solution that combines high-quality manufacturing with positive health benefits.

**TÜV-certified manufacturing quality  
Made in Germany.**

In-house development and manufacture at our production facility in Germany guarantee the high quality of our monitor mounts. As a manufacturer, DURABLE is certified to DIN EN ISO 9001 and DIN EN ISO 14001, making us a reliable partner for ergonomic workplace equipment.







### The highlights:

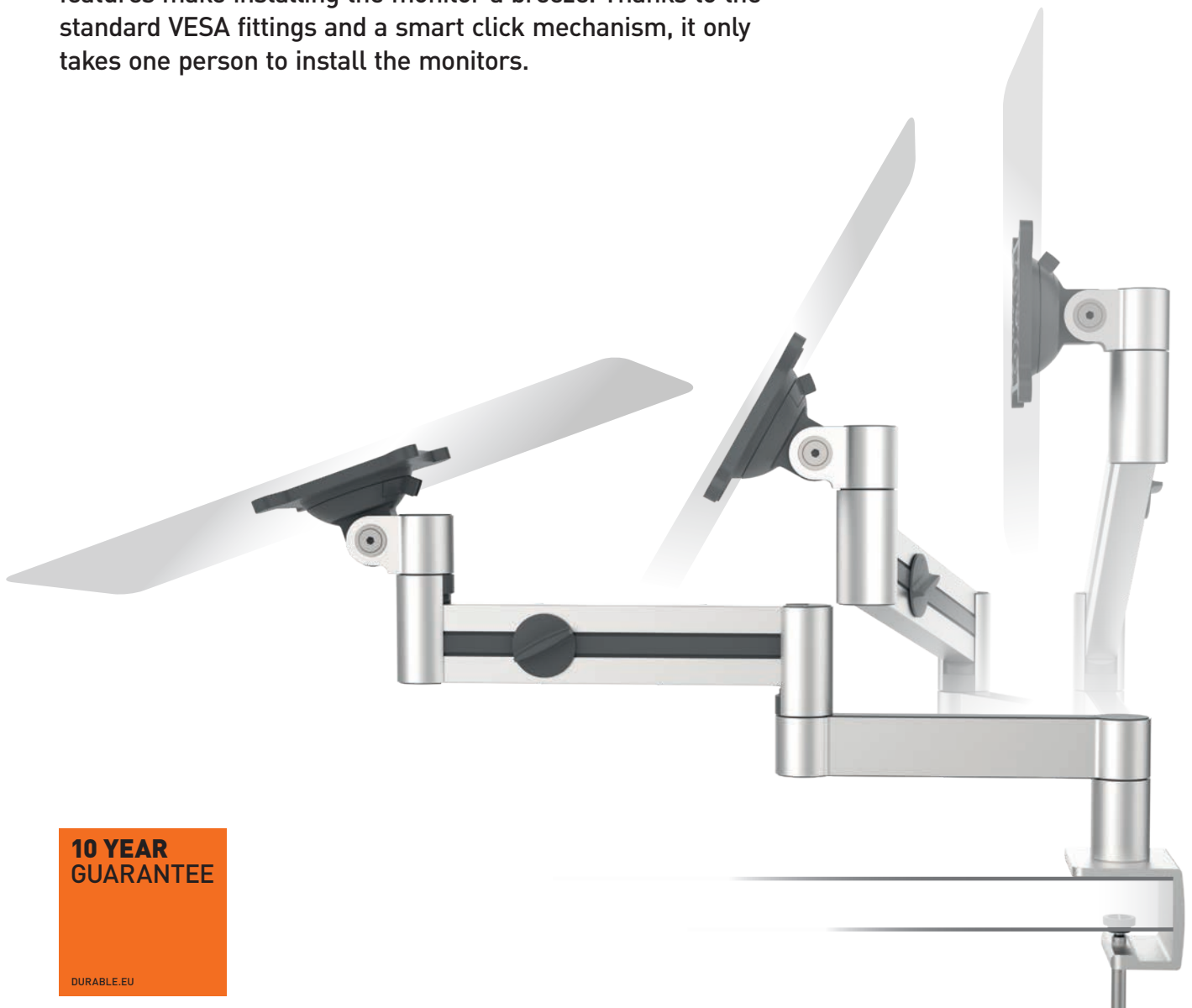
- Exceptional flexibility and smooth adjustment
- Simple monitor mounting with click mechanism
- Secure and organised cable routing with practical cable clips
- Long service life thanks to high-grade aluminium and premium plastics
- Patent pending for mounting system
- Quality made in Germany
- 10-year guarantee



# Flexible. Stable. High-quality. Sustainable.

All of our innovative monitor mount models are made from high-grade, recyclable aluminium and plastic parts. Sustainability was also an important factor when designing the packaging. The sophisticated packaging design uses one hundred percent untreated cardboard, without any styrofoam whatsoever.

The timeless design of the monitor mounts blends into any modern desk environment and saves space on the desktop thanks to their variable mounting options.. The monitor mounts' features make installing the monitor a breeze. Thanks to the standard VESA fittings and a smart click mechanism, it only takes one person to install the monitors.



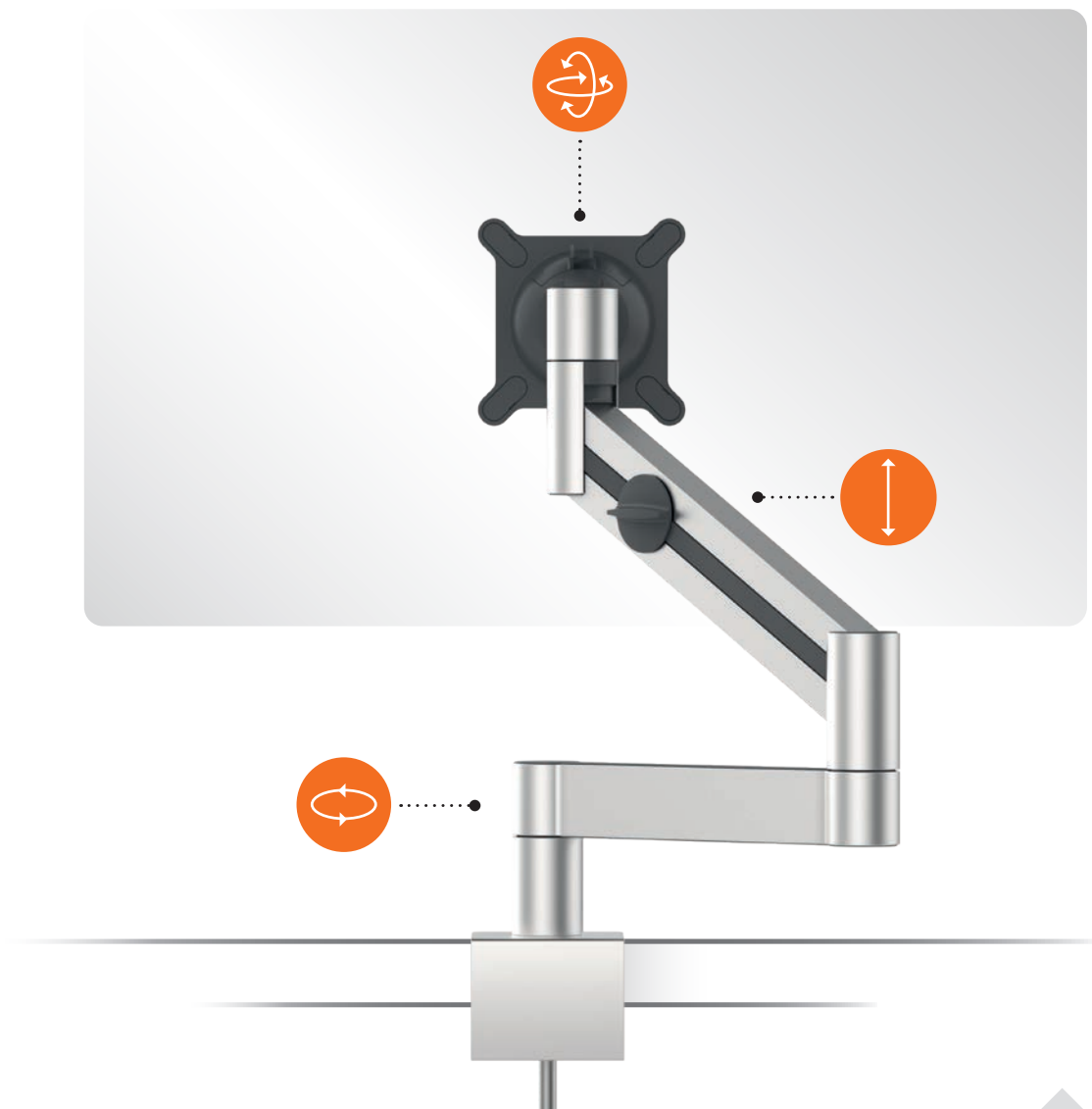
**10 YEAR  
GUARANTEE**

DURABLE.EU

# Monitor mount with arm for one screen

This monitor arm is the ideal desk mount for a single screen. It gives you the total freedom to adjust the position of the monitor for ergonomic viewing.

The integrated gas spring makes adjusting the screen a smooth process. A rotary knob lets you change the spring's resistance to match the weight of the monitor. Custom monitor tilt position always stays the same thanks to intelligent mounting system.







## Features:

- For monitors from 21 to 27 inches (53.34 to 68.58 cm) and 3 to 8 kg
- Also suitable for curved monitors up to 38 inches
- With 75 × 75 mm or 100 × 100 mm VESA mount
- Monitor can be rotated 360° for working in portrait or landscape mode
- Monitor can be tilted 110°; 85° upwards, 25° downwards
- Desk clamp/bolt-through fixing for desk thicknesses from 14 to 44 mm
- Easy assembly with enclosed tools
- Dimensions: 345 × 470 × 120 mm (W × H × D)
- 10-year guarantee

**Monitor Mount with arm**  
for 1 screen, Desk clamp

# 5083    23 silver    1 piece

**Monitor Mount with arm**  
for 1 screen, Through-desk

# 5084    23 silver    1 piece



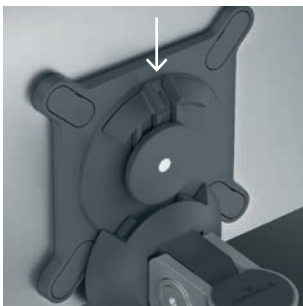
Desk clamp for desk thicknesses from 14 to 44 mm



Bolt-through fixing for desk thicknesses from 14 to 44 mm and desk hole diameters from 60 to 80 mm



Incl. 3 sliding cable clips for organising cables



Extra easy installation of the monitor in the mount thanks to click mechanism



Easy alignment to the monitor weight with a rotary knob



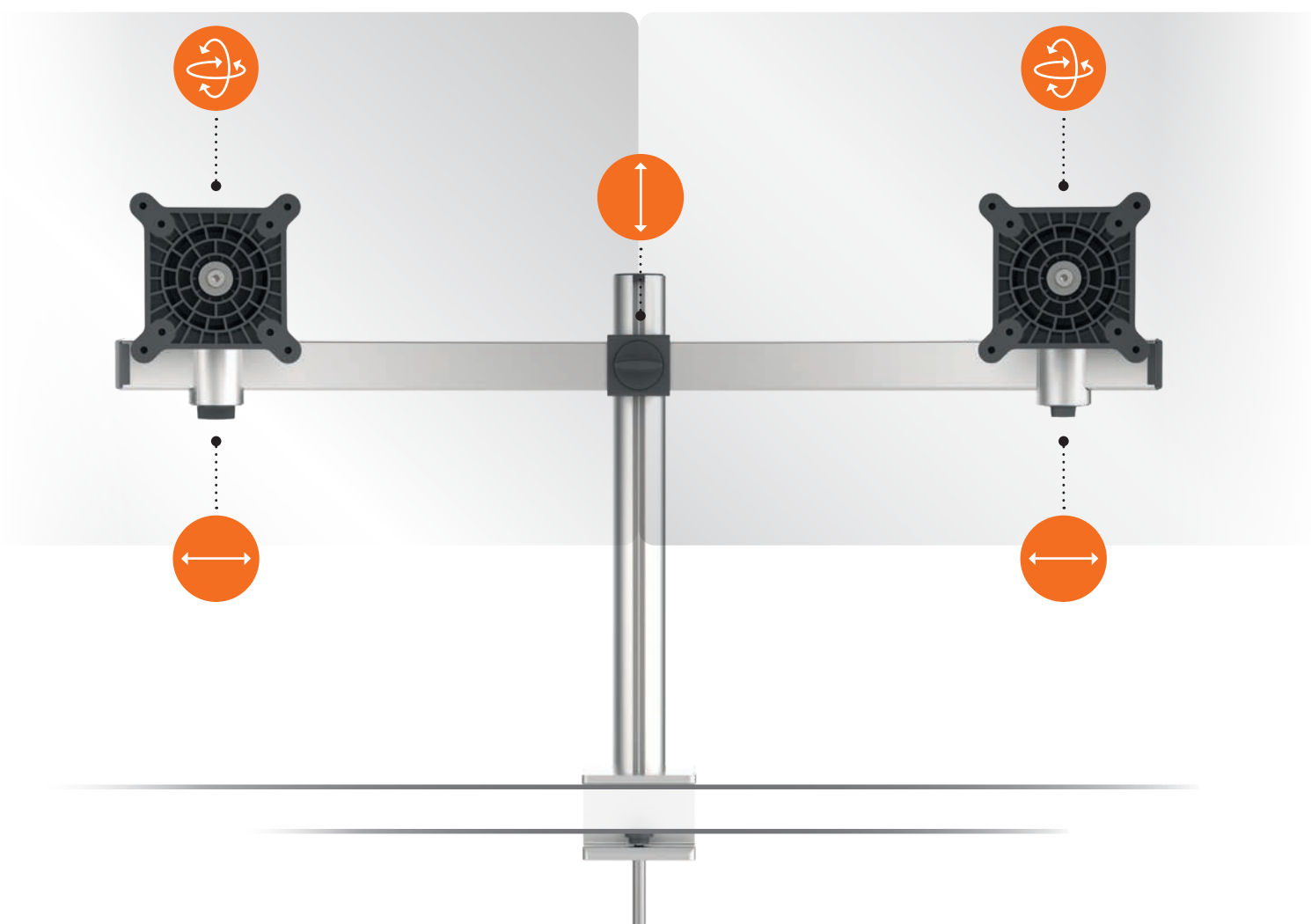
Monitor can be rotated 360° for working in portrait or landscape mode





# Monitor mount for two screens

The sturdy aluminium structure combined with a horizontal supporting arm, is the ideal solution for workstations with two screens. The innovative safety system ensures that the supporting arm does not slip while you adjust the height. This version also features a simple click mechanism for installing monitors. The screens can be moved along the supporting arm, aligned individually and used independently from one another, in portrait or landscape mode.







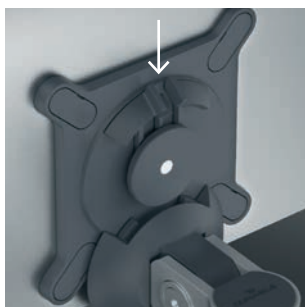
Desk clamp for desk thicknesses from 14 to 44 mm



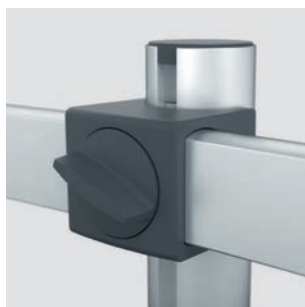
Bolt-through fixing for desk thicknesses from 14 to 44 mm and desk hole diameters from 60 to 80 mm



Incl. 5 sliding cable clips for organising cables



Extra easy installation of the monitor in the mount thanks to click mechanism



Height-adjustable monitor supporting arm, from 50 to 340 mm by simply turning the rotary knob



Monitor can be rotated 360° for working in portrait or landscape mode

## Features:

- For monitors from 21 to 27 inches (53.34 to 68.58 cm) and 3 to 8 kg
- With 75 × 75 mm or 100 × 100 mm VESA mount
- Monitor can be rotated 360° for working in portrait or landscape mode
- Monitor can be tilted 110°; 85° upwards, 25° downwards
- Height-adjustable monitor supporting arm, from 50 to 340 mm by simply turning the rotary knob
- Monitors can be moved and fixed along the length of the cross beam
- Desk clamp/bolt-through fixing for desk thicknesses from 14 to 44 mm
- Easy assembly with enclosed tools
- Dimensions: 780 × 445 × 190 mm (W × H × D)
- 10-year guarantee

### Monitor mount

for 2 screens, Desk clamp

# 5085   23 silver   1 piece

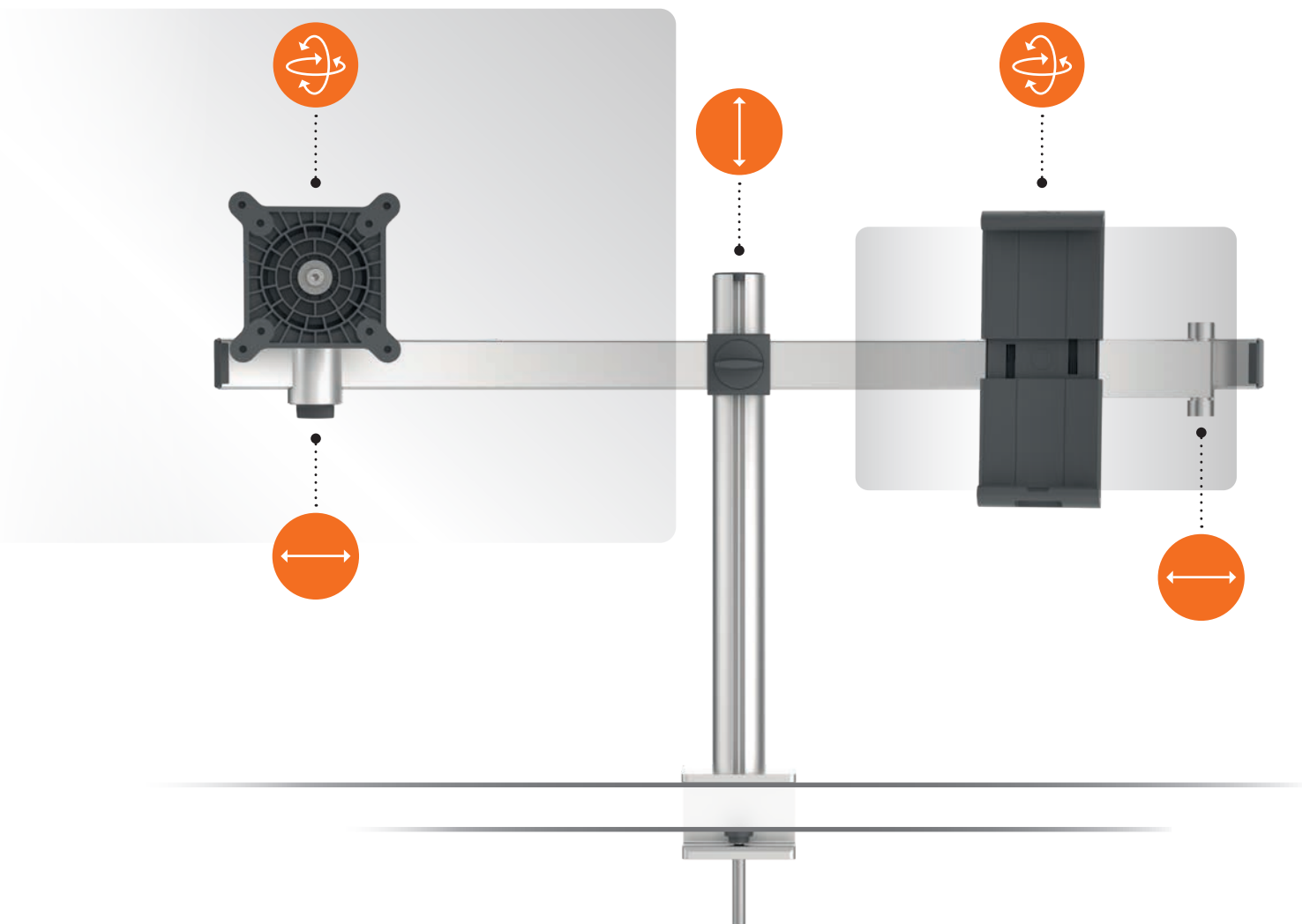
### Monitor Mount

for 2 screens, Through-desk

# 5086   23 silver   1 piece

# Desk mount for one screen and one tablet

This unique desk mount lets you use a monitor and a tablet at the same time. It combines the advantages of mobile working with those of the stationary desktop workstation. Both the smart click mechanism for monitor installation and the DURABLE tablet holder for attaching the tablet, which has already established itself in a modern working environment, make working with both devices seamless.





## Features:

### Monitor mount:

- For monitors from 21 to 27 inches (53.34 to 68.58 cm) and 3 to 8 kg
- Also suitable for curved monitors up to 34 inches
- With 75 × 75 mm or 100 × 100 mm VESA mount
- Monitor can be rotated 360° for working in portrait or landscape mode (portrait mode only possible for monitors up to 27 inches)
- Monitor can be tilted 110°; 85° upwards, 25° downwards

### Tablet mount:

- Tablet holder for all tablets in sizes from 7 to 13 inches
- The tablet can be tilted and rotated 360°, with snap-in points at 90°

### General:

- Height-adjustable supporting arm, from 50 to 340 mm by simply turning the rotary knob
- Monitors can be moved and fixed along the length of the cross beam
- Desk clamp/bolt-through fixing for desk thicknesses from 14 to 44 mm
- Incl. 5 sliding cable clips for organising cables
- Easy assembly with enclosed tools
- Dimensions: 780 × 445 × 190 mm (W × H × D)
- 10-year guarantee

### Monitor Mount

for 1 screen and 1 tablet, Desk clamp

# 5087 🌑 23 silver 📦 1 piece

### Monitor Mount

for 1 screen and 1 tablet, Through-desk

# 5088 🌑 23 silver 📦 1 piece



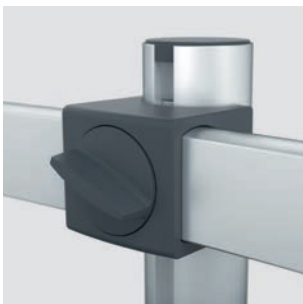
Desk clamp for desk thicknesses from 14 to 44 mm



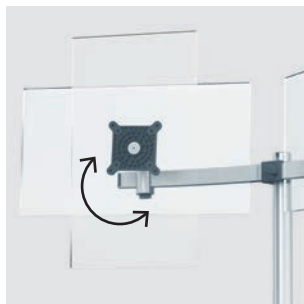
Bolt-through fixing for desk thicknesses from 14 to 44 mm and desk hole diameters from 60 to 80 mm



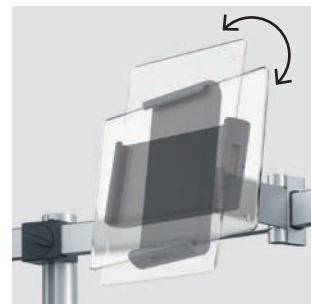
Extra easy installation of the monitor in the mount thanks to click mechanism



Height-adjustable monitor supporting arm, from 50 to 340 mm by simply turning the rotary knob



Monitor can be rotated 360° for working in portrait or landscape mode



Tablet holder for all tablets in sizes 7 to 13 inches – tablet can be tilted and rotated 360°, with snap-in points at 90°

# Wall mount for one screen

The wall mount is ideal for workstations that are limited in space. A clean desk is especially important for smaller desktops to make the most efficient use of the existing working area. Mounting the monitor on the wall saves valuable space in such situations. The angle and orientation of the screen can be selected according to individual preferences.



## Features:

- For monitors from 21 to 27 inches (53.34 to 68.58 cm) and 3 to 8 kg
- Also suitable for curved monitors up to 38 inches
- With 75 × 75 mm or 100 × 100 mm VESA mount
- Monitor can be rotated 360° for working in portrait or landscape mode (the tilt angles depend on the monitor size and are limited by the wall)
- Easy assembly with enclosed tools for solid and secure wall-mounting
- Dimensions: 130 × 120 × 140 mm (W × H × D)
- 10-year guarantee

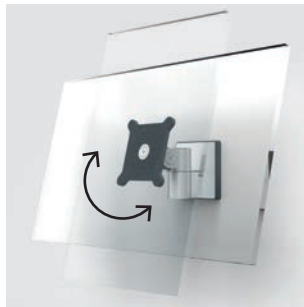
### Monitor Mount

for 1 screen, Wall mount

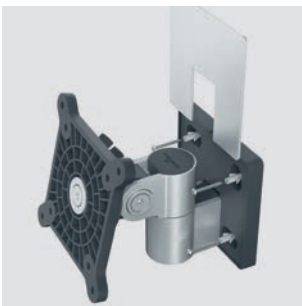
# 5089    23 silver    1 piece



Extra easy installation of the monitor in the mount thanks to click mechanism



Monitor can be rotated 360° for working in portrait or landscape mode



Easy assembly with enclosed tools for secure wall mounting



# Wall mount with arm for one screen

The flexible monitor mount combines high ergonomic comfort with practical wall mounting. The integrated gas spring in the supporting arm keeps the screen in the desired position. The arm can be locked in place with a rotary knob depending on the weight of the monitor. The high-quality aluminium surface finish enhances the appearance of any working environment.



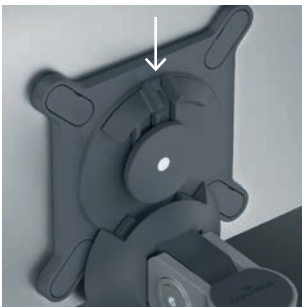
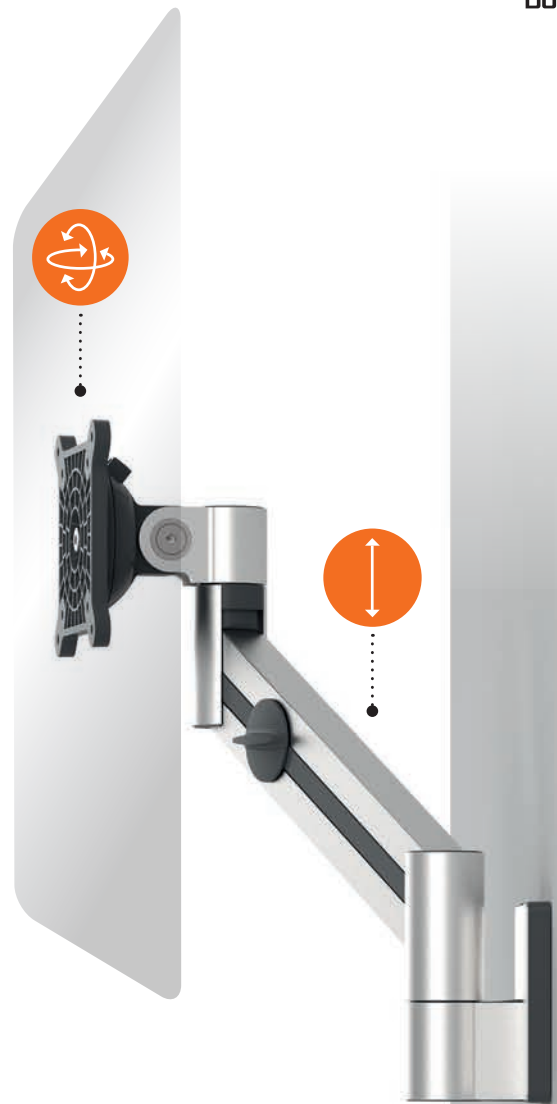
## Features:

- For monitors from 21 to 27 inches (53.34 to 68.58 cm) and 3 to 8 kg
- Also suitable for curved monitors up to 38 inches
- With 75 × 75 mm or 100 × 100 mm VESA mount
- Monitor can be rotated 360° for working in portrait or landscape mode
- Monitor can be tilted 110°; 85° upwards, 25° downwards
- Height-adjustable arm, from 20 to 130 mm
- Easy assembly with enclosed tools for solid and secure wall-mounting
- Dimensions: 290 × 350 × 120 mm (W × H × D)
- 10-year guarantee

### Monitor Mount

with arm for 1 screen, Wall mount

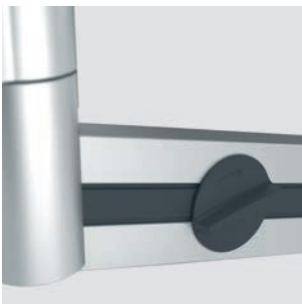
# 5090    23 silver    1 piece



Extra easy installation of the monitor in the mount thanks to click mechanism



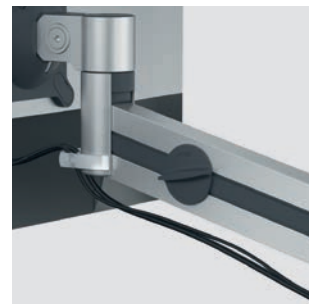
Monitor can be rotated 360° for working in portrait or landscape mode



Easy alignment to the monitor weight with rotary knob



Easy assembly with enclosed tools for secure wall mounting



Incl. 3 sliding cable clips for organising cables

# Technical details

## Monitor Mount with arm for 1 screen

- For monitors from 21 to 27 inches (53.34 to 68.58 cm) and 3 to 8 kg
- Also suitable for curved monitors up to 38 inches
- With 75 × 75 mm or 100 × 100 mm VESA mount
- Monitor can be rotated 360° for working in portrait or landscape mode
- Monitor can be tilted 110°; 85° upwards, 25° downwards
- Angle of rotation: max. 200° for lower arm, 360° for upper arm
- Height-adjustable upper arm, from 20 to 130 mm
- Easy assembly
- Dimensions: 345 × 470 × 120 mm (W × H × D)

# 5083-23 Desk clamp

# 5084-23 Through-desk

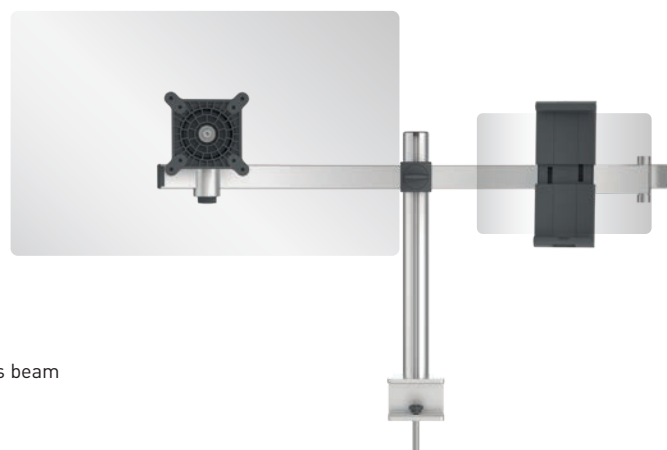


## Monitor Mount for 1 screen and 1 tablet

- For monitors from 21 to 27 inches (53.34 to 68.58 cm) and 3 to 8 kg
- Also suitable for curved monitors up to 34 inches
- With 75 × 75 mm or 100 × 100 mm VESA mount
- Monitor can be rotated 360° for working in portrait or landscape mode (portrait mode only possible for monitors up to 27 inches)
- Monitor can be tilted 110°; 85° upwards, 25° downwards
- Tablet holder for all tablets in sizes from 7 to 13 inches
- The tablet can be rotated 360°, with snap-in points at 90°
- Height-adjustable support arm, from 50 to 340 mm
- The screen and tablet can be moved and fixed along the length of the cross beam
- Dimensions: 780 × 445 × 190 mm (W × H × D)

# 5087-23 Desk clamp

# 5088-23 Through-desk



## Monitor Mount for 1 screen, Wall mount

- For monitors from 21 to 27 inches (53.34 to 68.58 cm) and 3 to 8 kg
- Also suitable for curved monitors up to 38 inches
- With 75 × 75 mm or 100 × 100 mm VESA mount
- Monitor can be rotated 360° for working in portrait or landscape mode
- Monitor can be tilted 110°; 85° upwards, 25° downwards (the tilt angles depend on the monitor size and are limited by the wall)
- Easy assembly
- Dimensions: 130 × 120 × 140 mm (W × H × D)

# 5089-23

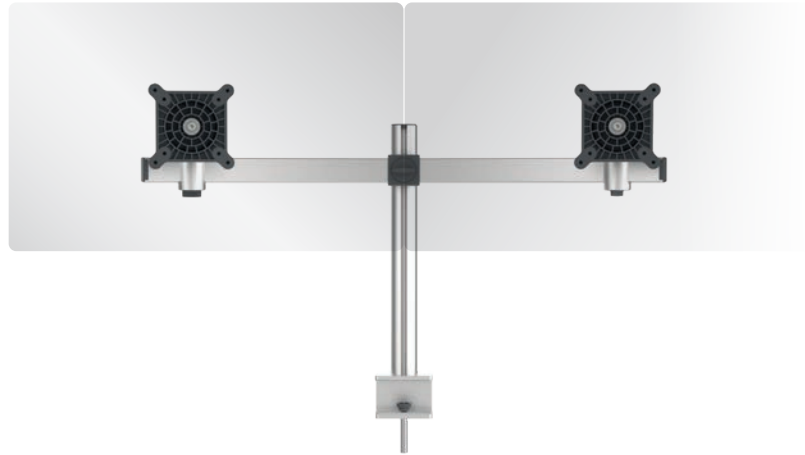




## Monitor Mount for 2 screens

- For monitors from 21 to 27 inches (53.34 to 68.58 cm) and 3 to 8 kg
- With 75 × 75 mm or 100 × 100 mm VESA mount
- Monitor can be rotated 360° for working in portrait or landscape mode
- Monitor can be tilted 110°; 85° upwards, 25° downwards
- Height-adjustable monitor supporting arm, from 50 to 340 mm
- Monitors can be moved and fixed along the length of the cross beam
- Easy assembly
- Dimensions: 780 × 445 × 190 mm (W × H × D)

# 5085-23 Desk clamp  
# 5086-23 Through-desk



## Monitor desk mounts Mounting options

All monitor desk mounts are available with desk clamps or bolt-through fixings.



Desk clamp for desk thicknesses from 14 to 44 mm



Bolt-through fixing for desk thicknesses 14 to 44 mm and desk hole diameters from 60 to 80 mm

## Monitor Mount with arm for 1 screen, Wall mount

- For monitors from 21 to 27 inches (53.34 to 68.58 cm) and 3 to 8 kg
- Also suitable for curved monitors up to 38 inches
- With 75 × 75 mm or 100 × 100 mm VESA mount
- Monitor can be rotated 360° for working in portrait or landscape mode
- Monitor can be tilted 110°; 85° upwards, 25° downwards
- Height-adjustable upper arm, from 20 to 130 mm
- Easy assembly
- Dimensions: 290 × 350 × 120 mm (W × H × D)

# 5090-23









**DURABLE · Hunke & Jochheim GmbH & Co. KG**  
Westfalenstraße 77-79 · 58636 Iserlohn  
Postfach 1753 · 58634 Iserlohn  
T +49 (0)23 71 662-0  
F +49 (0)23 71 662-221  
durable@ durable.de · durable.de

#### **INTERNATIONAL**

**DURABLE · Hunke & Jochheim GmbH & Co. KG**  
Westfalenstraße 77-79 · 58636 Iserlohn  
P.O. Box 1753 · 58634 Iserlohn · Germany  
P +49 (0)23 71 662-0  
F +49 (0)23 71-662-221  
durable@ durable.de · durable.eu

#### **FR**

**DURABLE France S.A.S**  
Immeuble Le Tryalis · 9, rue de Rosny · 93100 Montreuil  
T +33 (0)1 48 12 10 90  
F +33 (0)1 48 55 05 09  
durable@ durable.fr · durable.fr

#### **NL**

**DURABLE Nederland B.V.**  
Monierweg 3 · 7741 KV Coevorden  
T +31 (0)416 543 543  
F +31 (0)416 543 058  
durable@ durable.nl · durable.nl

#### **PL**

**Biuro Obsługi Klienta DURABLE Polska**  
Al.Kasztanowa 10 · 72-005 Przecław  
T +48 (0)91 432 40 70  
F +48 (0)91 432 40 83  
bok@ durable.pl · durable.pl

#### **SE**

**DURABLE SCANDINAVIA AB**  
Fågelsångsvägen 4B · 186 42 Vallentuna  
Box 4 · 186 21 Vallentuna  
T +46 (0)8-630 11 50  
info@ durable.se  
durable.se

#### **UK**

**DURABLE (UK) Ltd.**  
10 Nimrod Way, Wimborne, Dorset, BH21 7SH  
P +44 (0)1202 89 70 71  
F +44 (0)1202 87 33 81  
customeroperations@ durable-uk.com  
durable-uk.com

#### **BE**

**DURABLE Belgium N.V./S.A.**  
Industriepark 14/101 · 9031 Gent-Drongen  
T +32 (0)9 281 26 44  
F +32 (0)9 281 26 29  
durable@ durable.be · durable.be

#### **IT**

**DURABLE Italia S.R.L**  
Via Dottor Pietro Greppi, 15/B · 23824 Dervio (LC)  
T +39 (0)341 807 806  
info@ durable.it · durable.it

#### **RU**

**Представительство компании DURABLE в России**  
123290, г. Москва,  
ул.2-я Магистральная, д.14Г, стр.1, бизнес-центр МЕЛА  
Т/Ф +7 (0)495 601 92 13  
durable\_russia@mail.ru · durable-russia.com

#### **US**

**DURABLE Office Products Corp.**  
2475 S. Wolf Road · Des Plaines, IL 60018  
P +1 (0)800 273 31 18/847 787 01 00  
F +1 (0)847 787 03 11  
customerservice@ durableofficeproducts.com  
durable-north-america.com